



# MCAS - 407MH

MISSION CONFIGURABLE AIRCRAFT SYSTEM

 DILLON AERO



# THE STANDARD

## > LIGHT ASSAULT HELICOPTERS

The Dillon Aero Mission Configurable Aircraft System (MCAS-MH) provides an exceptional assault solution for the Bell 407 series of helicopters. Years of direct, hands-on experience coupled with innovation engineers have produced a personnel carrying platform that is lighter, more capable, and easier to support than other systems currently available. The common 'A-kit' is comprised of six parts and is non-evasive to the fuel cells.

Airframe sustainability and useful load benefit from the decreased overall weight; with a basic MH weight of 80 pounds, this system is a first of it's kind, bridging the dual-use capability gap, offering one system that meets both the AH and MH mission set. With a capacity of 1000 pounds per external personnel system, the aircraft can now carry more personnel, fuel, or additional Mission Equipment Packages (MEP).

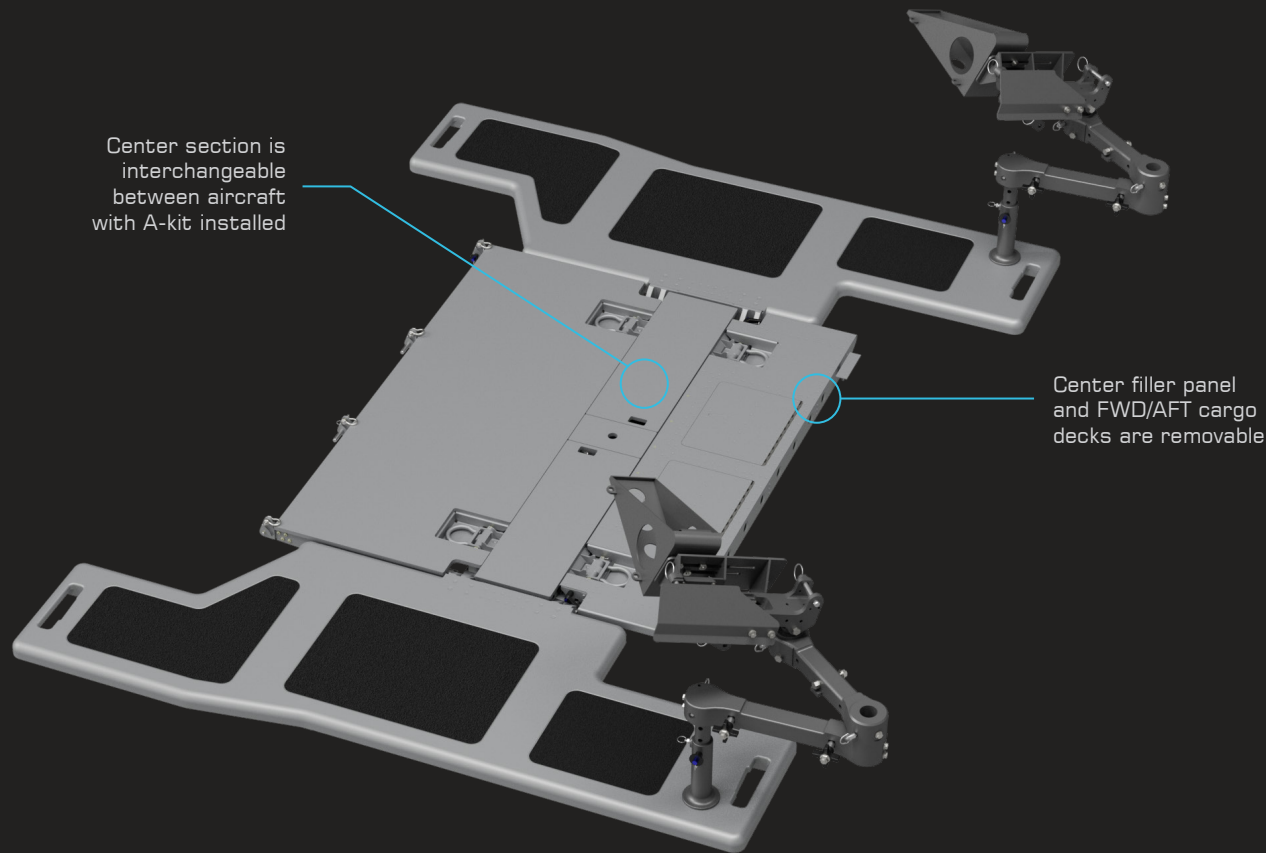
The common center section is reversible. Additionally, the system incorporates a cargo floor option that will allow for approximately 700 pounds of useful load on a flat surface incorporating multiple tie down points to secure 'precious cargo'. The cargo configuration allows for full operation of the doors and is approximately 15 pounds.

Hard-points on the top and bottom of the MCAS-MH provide users with multiple configuration options to suit any mission profile. The system can easily be configured to attach a machine gun, mount, and pintle-arm, and caving ladder. Additionally, the system incorporates up to six removable mounting lugs coupled with additional mounting provisions.

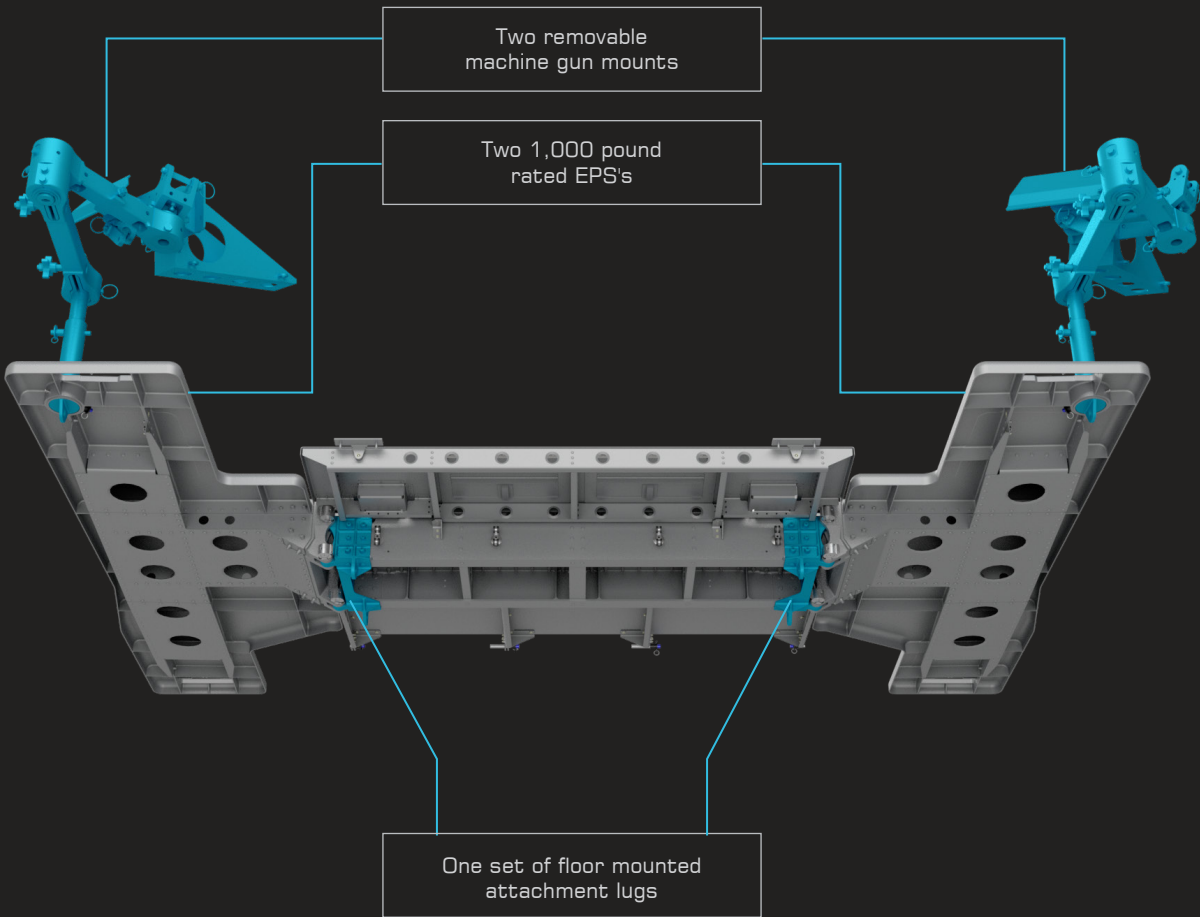
The MCAS-MH external personnel systems or 'pods' stow to reduce the lateral dimension, resulting in easier transport and a reduced hangar footprint. The gaps between the airframe and the external personnel system are reduced and hand grips are incorporated. Damage prone areas are easily replaced in the field; it is not necessary to replace an entire plank because of localized damage. The MCAS-MH lightweight plank is interchangeable between aircraft; with complete interchangeability between airframes, there is no need for aircraft tail number specific hardware.



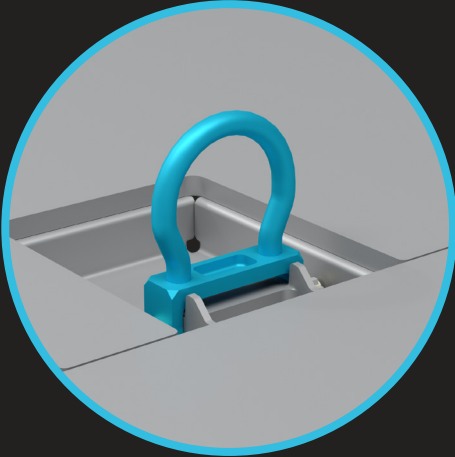
GENERAL OVERVIEW



MISSION EQUIPMENT PACKAGES

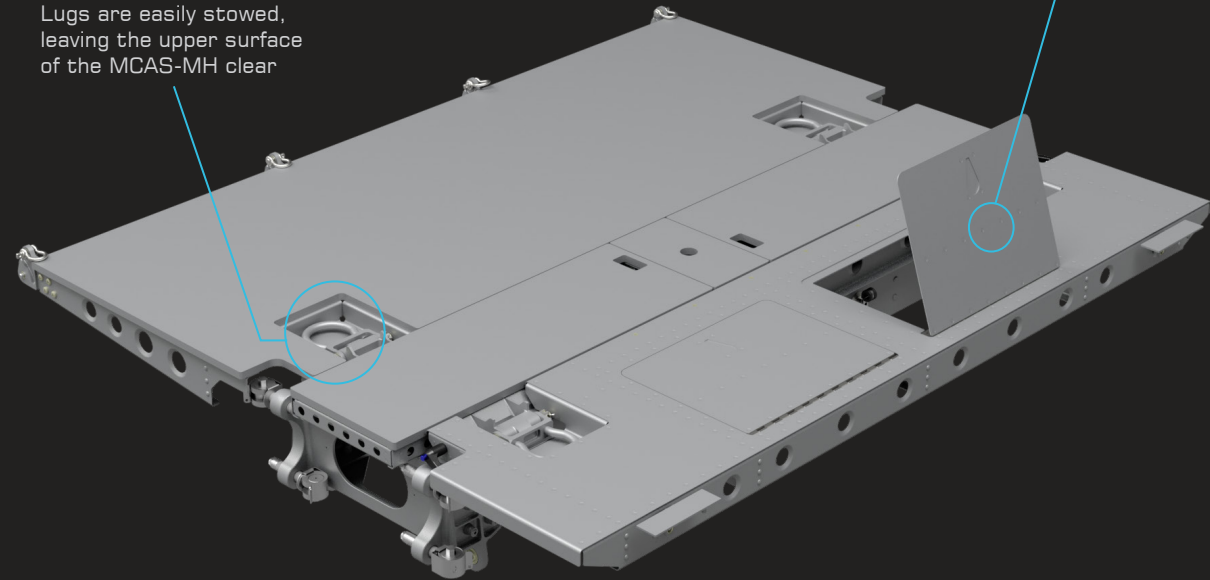


CARGO FLOOR

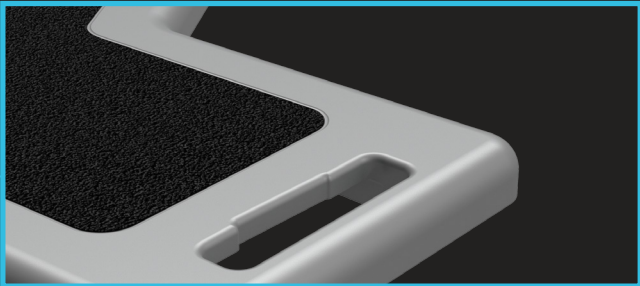


Lugs are easily stowed, leaving the upper surface of the MCAS-MH clear

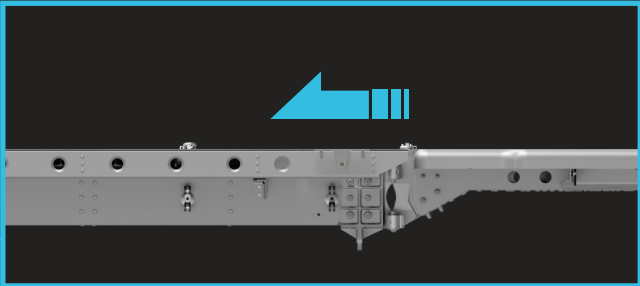
Doors provide access to underfloor storage



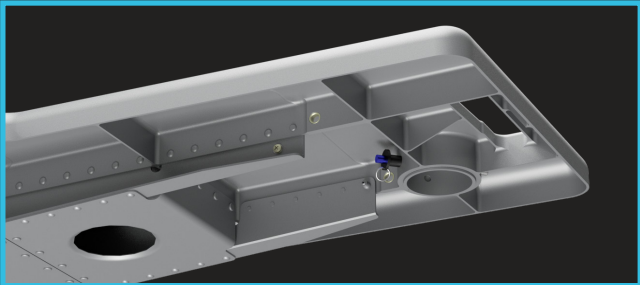
EXTERNAL PERSONNEL SYSTEM



Features anti-skid surfaces for personnel safety



Surface of external personnel systems are flush with cargo floor for ease of cargo loading



Accessory mounting provisions provide up to 125 pounds of useful load

MACHINE GUN PINTLE



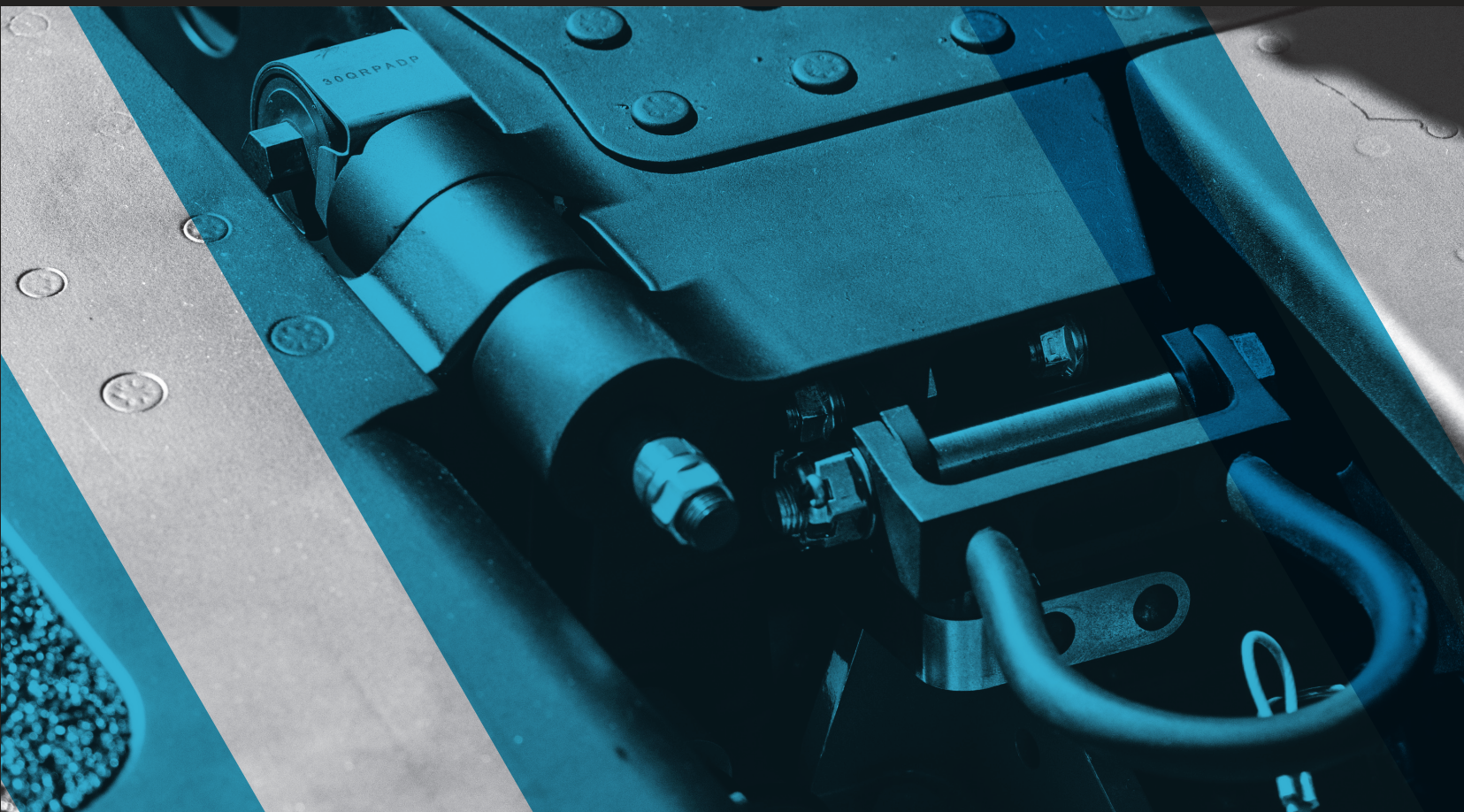
Removable pintle is secured with a single quick-release pin

WEIGHT SUMMARY

B407 MCAS MH				
	Legacy		MCAS	
	Lb	Kg	Lb	Kg
A- Kit	N/A	N/A	6.80	3.08
Center Section	N/A	N/A	24.20	10.98
MH Outer Sections	N/A	N/A	50.62	22.96
Base Kit Total	-	-	81.62	37.02
Gun Mount	-	-	12.00	5.44
CARGO DECK				
	Legacy		MCAS	
	Lb	Kg	Lb	Kg
A- Kit	8.00	3.63	6.80	3.08
Center Section	128.00	58.06	24.20	10.98
Forward Deck	-	-	4.63	2.10
Aft Deck	-	-	6.77	3.07
Center Filler Panel x 2	26.00	11.79	1.38	0.63
Base Kit Total	162.00	73.48	43.77	16.16
Weight Savings	-	-	118.23	57.32

\*FOR SYSTEM WEIGHT ESTIMATION ONLY.





Dillon Aero MCAS-MH developed for the Bell 407

- Lightweight
- Provisions for accessories
- Designed by SOF aviation users
- Field maintainable/repairable
- Stow-able for easy transportability
- Complete airframe interchangeability
- Clean/efficient design for ease of operation
- External Personnel System 1,000 lb. rating